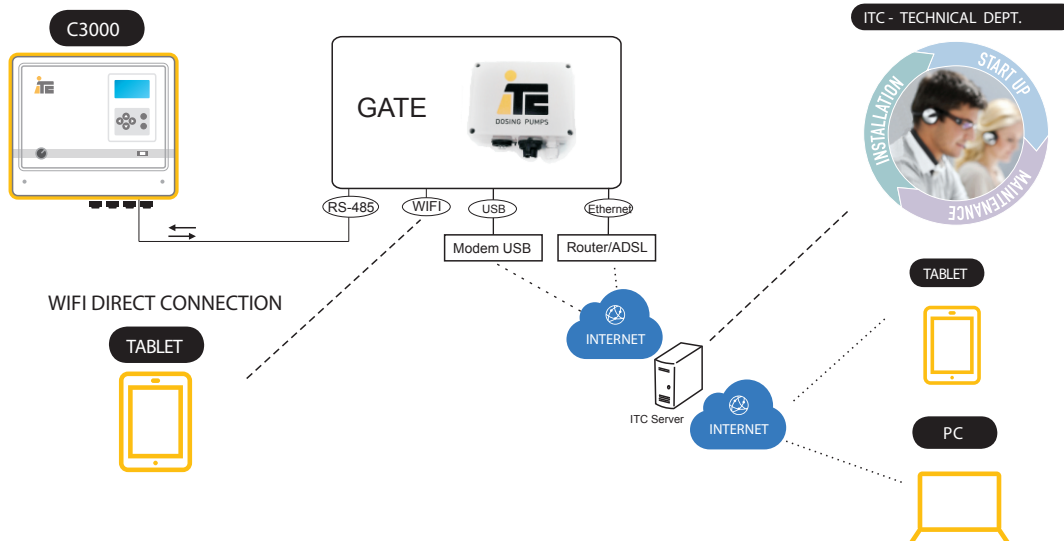


DESCRIPTION

GATE-C3000 lets check, change parameters, and control a C3000 using a PC or mobile device (smartphone, tablet) as local mode (ethernet or wifi) and remote mode (www.itc-cloud-manager.com).

GENERAL COMMUNICATION SCHEMA



TECHNICAL FEATURES

Supply voltage: 85-264Vac, 50/60Hz
 Power: 6W
 Temperature: 0-45°C
 Relative humidity: 0-95% no condensation
 Dimensions: 160x80x90mm
 Connectivity:
 Ethernet, ADSL connection, router 3G.
 Modem USB, accessory for good telephonic reception without outdoors antenna
 Wifi, for a direct connection using a tablet.

Connections:

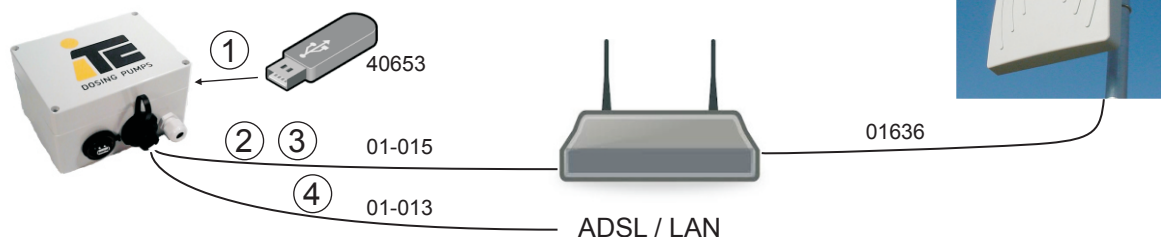
wifi:	
password:webscada	- A B - - + + = L N
http://1.2.3.4:7777	RS IN dry OUT IN 100-240 485 contact 12Vdc Vac

Ref.: 01-001



ACCESORIES

- 40653 Módem USB 3G
- 01-015 Router 3G with indoors antenna and 1m ethernet cable IP 68
- 01-013 1m ethernet cable IP 68
- 01636 Outdoors antenna with 5m cable



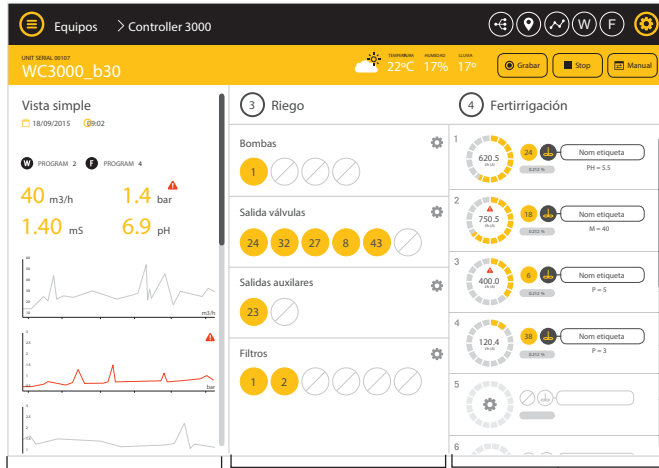
OPTIONS:

- 1.- GATE(01-001)+ modem USB(40653), for good reception.
- 2.- GATE(01-001)+ Router 3G (01-015), for medium reception.
- 3.- GATE(01-001)+ Router 3G (01-015) + outdoors antenna (01636), for poor reception.
- 4.- GATE(01-001)+ ethernet cable (01-013), to connect at the customer LAN.

FUNCTIONALITIES:

To check change parameters, and control a C3000 can be done using a web browser (Explorer, Firefox, Chrome, Safari) in real time.

CONTROL PANEL: Real time readings.



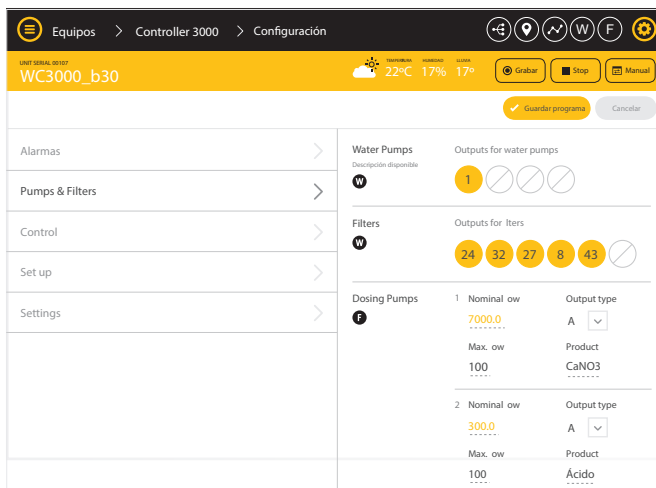
Readings: Flow, Pressure, Irrigation active program. Dosing pumps and its flow. EC, and pH.

DATA LOGGER



Data is stored inside the GATE, in the Cloud server <http://www.itc-cloud-manager.com/>. Registers of the data are created using the standard XML. It can be imported directly from an Excel datasheet.

CONFIGURATION



Equipment is setup using the menu W programs, F programs and Set up.