

## CONNECTING WATER/CONTRONROLLER 3000 TO [www.itc-cloud-manager.com](http://www.itc-cloud-manager.com) THROUGH ROUTER-3G

### NOTE

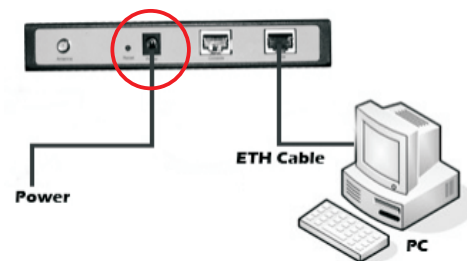
The MATRIX 3G ROUTER is pre-configured by ITC to :

- IP Address: 172.17.245.1
- User: Itc
- Password: fertic

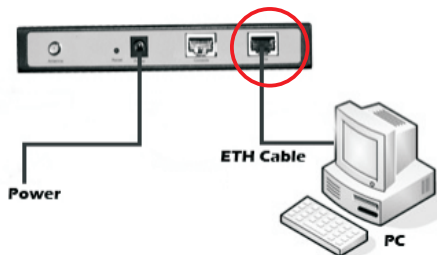
### 1 Insert SIM CARD Into Router-3G



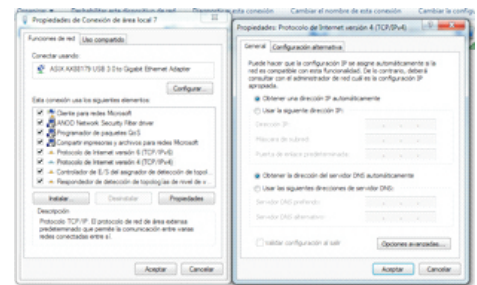
### 2 Turn on the Router 3G



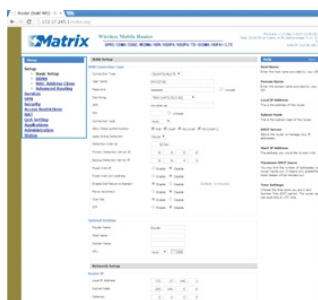
### 3 Connect Your Laptop/PC through Ethernet cable



### 4 Configure Ethernet adapter in your PC to get Address automatically



### 5 Open your internet browser and go to <http://172.17.245.1> address



### 6 Go to "Setup" → "Basic Setup" menu. Enter the username and password (Itc/fertic)



- 7** Change "User Name", "Password" and "APN" according to your SIM CARD operator. You will find some help here: <http://wiki.apnchanger.org>. If your SIM card has 'PIN' code, you should add it in this section

- 8** At the bottom of the page, click on "Apply Settings" button and, after this, click on "Save" button

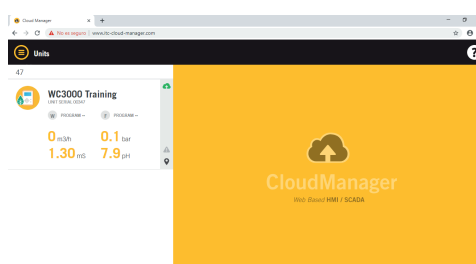
- 9** Go to "Administration"—>"Management", and click button "Reboot Router". Alternatively, you can try turning off-on the router

- 10** After reboot, check if the changes are ok in "Setup"—>"Basic Setup", and Check in "Status"—>"WAN" menu if it is connected.

- 11** Connect Ethernet cable between GATE and Router-3G. Turn on the GATE (With UNIT Controller Connected to through RS485 or USB) and wait about 3 minutes



- 12** Go to <http://www.itc-cloud-manager.com> to see your UNIT connected



## NOTE

The GATE is pre-configured by ITC to work directly with MATRIX 3G ROUTER configuration.