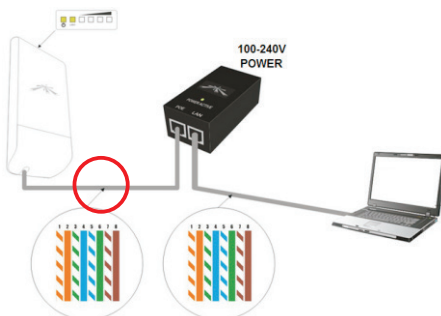


CONNECTING UNITS TO www.itc-cloud-manager.com THROUGH WIFI NANOSTATION LOCO M2

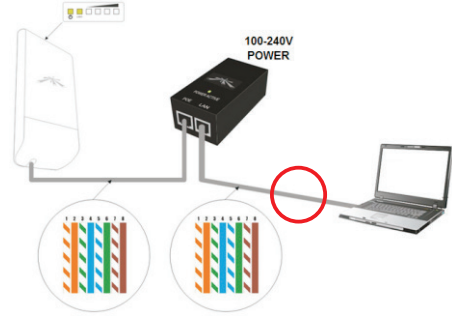
NOTE

The NANOSTATION LOCO M2 is pre-configured by ITC to:
IP Address: 172.17.245.1
User: Itc
Password: fertic

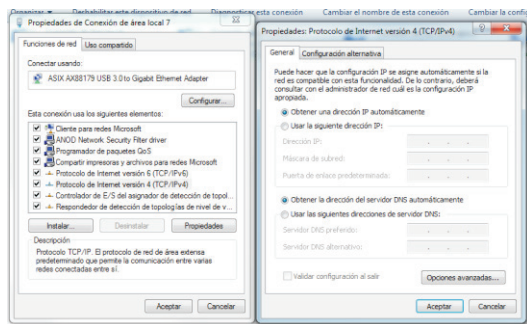
1 Connect NANOSTATION LOCO M2 to 100-240V Power



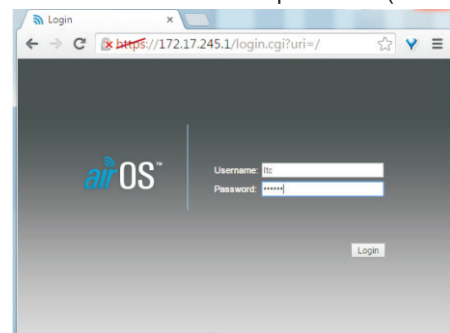
2 Connect Your Laptop/PC through Ethernet cable



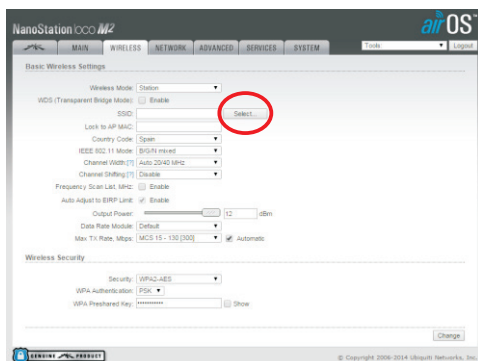
3 Configure Ethernet adapter in your PC to get IP address automatically



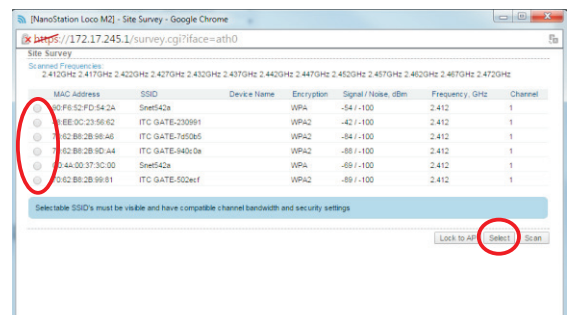
4 Open your internet browser and go to <http://172.17.245.1> address. Enter the username and password (Itc/fertic).



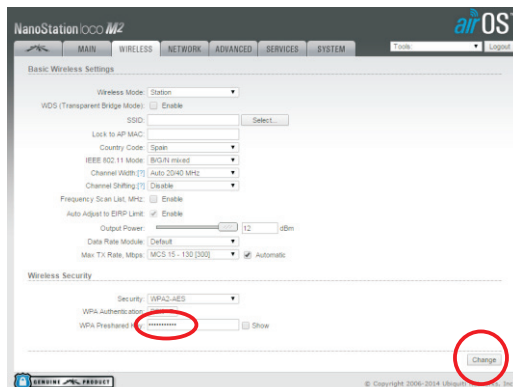
5 Go to "Wireless" "SSID" and click "Select..." button



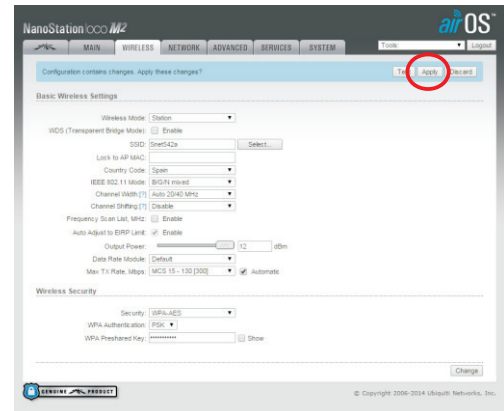
6 Select Wifi Network you want to connect, and click "Select" button



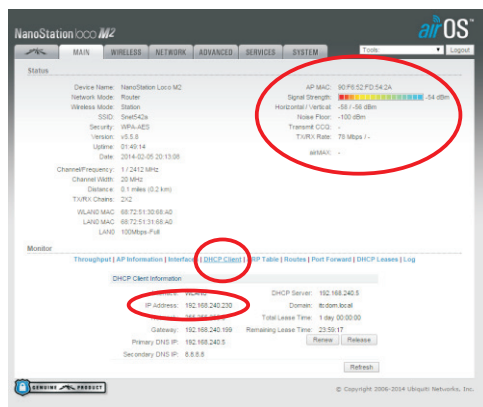
- 7 Enter the Wifi password, if needed, and click “Change” button



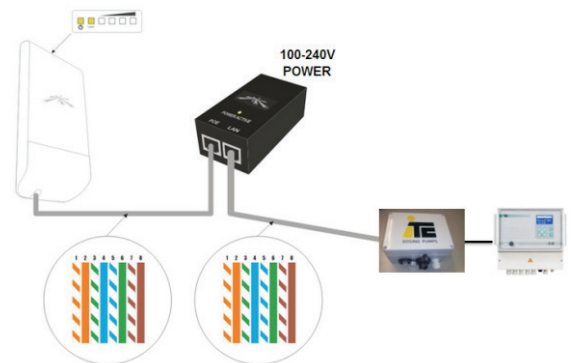
- 8 Click on “Apply” button



- 9 Go to “Main” tab, and check if signal is stable and associated. Click on DHCP Client and check if Wifi Network has assigned an IP Address to Wifi Antenna



- 10 Connect Ethernet cable between GATE and NANOSTATION LOCO M2. Turn on the GATE (With UNIT Controller Connected through USB/RS485) and wait about 3 minutes



- 11 Go to <http://www.itc-cloud-manager.com> to see your UNIT connected



NOTE

The GATE is pre-configured by ITC to work directly with NANOSTATION LOCO M2 configuration.