

CONNECTING UNITS TO www.itc-cloud-manager.com THROUGH EXISTENT *ADSL ROUTER

* The Router can connect to internet with another technology (Cable, Satellite, 3G, 4G, Wimax, etc.), but must have an ethernet adapter in local side.

You can configure the GATE network options with or without UNIT connected, but the Web configuration will alert if the UNIT is not connected.

NOTE

You can configure the GATE through:

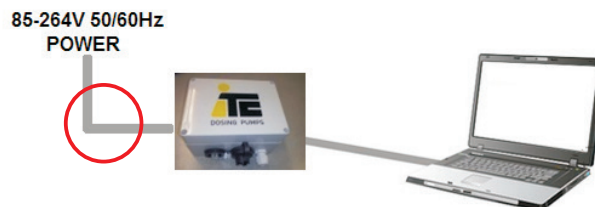
- Ethernet cable: Instructions **A+C**
- Wifi connection: Instructions **B+C**

A

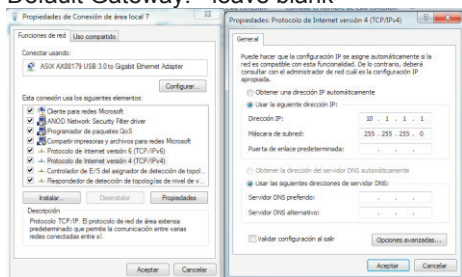
- 1 Connect your Laptop/PC to GATE through Ethernet cable



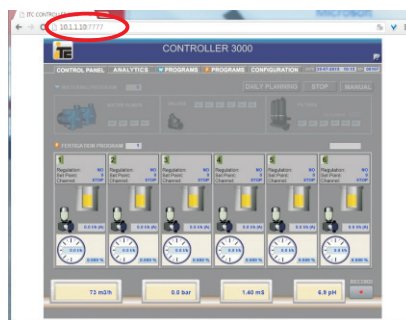
- 2 Power ON the Gate



- 3 Configure Ethernet adapter in your PC with following configuration: IP Address: 10.1.1.1
NetMask: 255.255.255.0
Default Gateway: <leave blank>



- 4 Go to GATE website:
<http://10.1.1.10:7777> (Ethernet)



B

- 1 Connect to GATE Wifi Network "ITC GATE-xxxxxx" with password "webscada". "xxxxxx" is a 6 digit Gate SerialNumber

85-264V 50/60Hz
POWER



- 2 Go to GATE website:
<http://1.2.3.4:7777> (Wifi)



GATE ADSL ROUTER CONFIGURATION

©

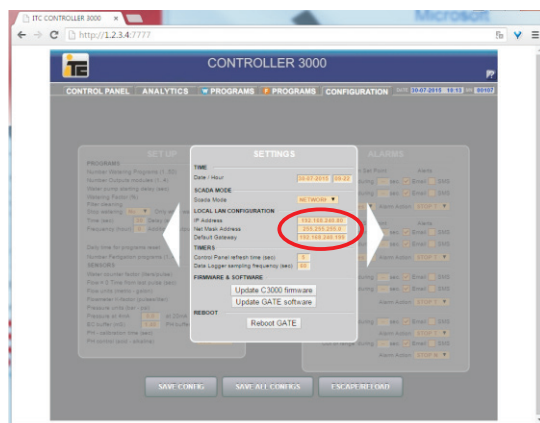
- 1 Go to CONFIGURATION tab and then switch to left SETTINGS slide



- 2 You have to configure Scada Mode to "NETWORK" option, and...



- 3 in LOCAL LAN CONFIGURATION you have to put a IP Address, NetMask and Default Gateway, according to the Local Network where you want to connect the GATE

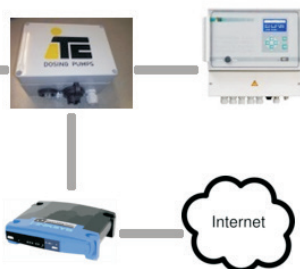


- 4 Click on "SAVE CONFIG" button. After Configuration is saved, click on "Reboot GATE" button



- 5 Connect the GATE to ADSL Router through Ethernet (directly or through switch), and connect UNIT Ethernet through USB/RS485. Wait about 3 minutes

85-264V 50/60Hz
POWER



- 6 Go to <http://www.itc-cloud-manager.com> to see your UNIT connected

