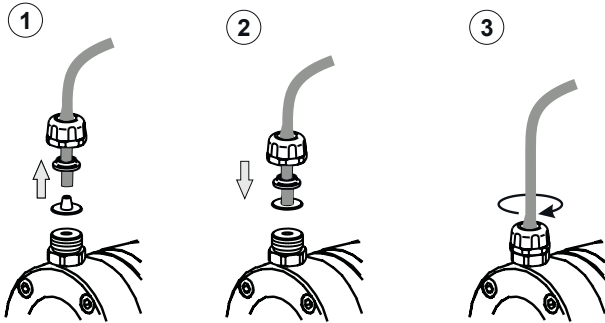
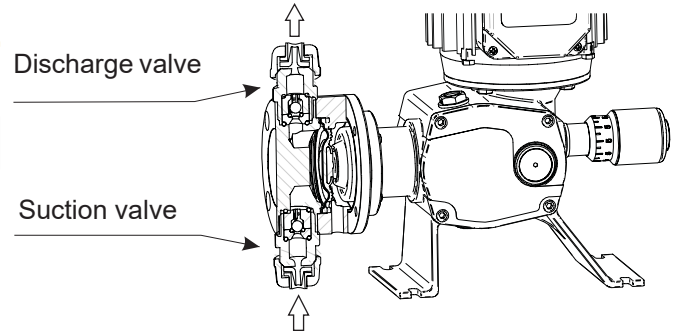


# CHECK VALVES L3/4" 4-6-10, DOSTEC

**D40 012**

## TECHNICAL FEATURES

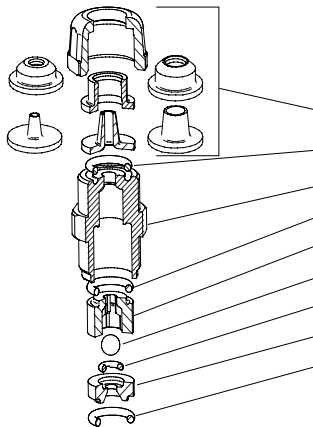
Max. flow.: $\Delta$	120 l/h 32GPH	60 l/h 16GPH	10 l/h 3GPH
Connection thread:	3/4"	3/4"	3/4"
Hose connection:	10x12 mm	6x12 mm 6x8 mm	4x6 mm



## LIST OF PARTS

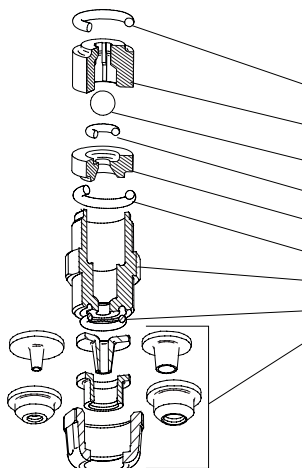
BODY	PP		PVDF	AISI 316
SEAL (o-ring)	FPM		FPM	
BALL	BORO.	AISI 316	BORO	AISI 316

## DISCHARGE



<b>55-801-P</b>	<b>55-801-P +60-B8I</b>	<b>55-801-P +60-060</b>	<b>55-801-F</b>	<b>55-801-I</b>
55-824-P	55-824-P	55-824-P	55-824-F	-
62310	62310	62310-E	62310	62310
55819-P	55819-P	55819-P	55819-F	55819-I
62310	62310	62310-E	62310	62310
60813.1-P	60813.1-P	60813.1-P	60813.1-F	60813.1-I
64348	64351	64348	64348	64351
60308	60308	60308-E	60308	60308
60812.1-P	60812.1-P	60812.1-P	60812.1-F	60812.1-I
62310	62310	62310-E	62310	62310

## SUCTION



<b>55-802-P</b>	<b>55-802-P +60-B8I</b>	<b>55-802-P +60-060</b>	<b>55-802-F</b>	<b>55-802-I</b>
62310	62310	62310-E	62310	62310
60813.1-P	60813.1-P	60813.1-P	60813.1-F	60813.1-I
64348	64351	64348	64348	64351
60308	60308	60308-E	60308	60308
60812.1-P	60812.1-P	60812.1-P	60812.1-F	60812.1-I
62310	62310	62310-E	62310	62310
55819-P	55819-P	55819-P	55819-F	55819-I
62310	62310	62310-E	62310	62310
55-824-P	55-824-P	55-824-P	55-824-F	-

Optional:

- 60-B8C Kit ball Ø8 Ceramic
- 60-060-T Kit TFE/P o-rings valve 6x12