

CHECK VALVE 4X6

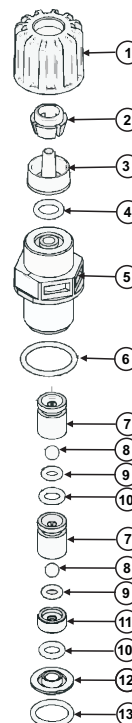
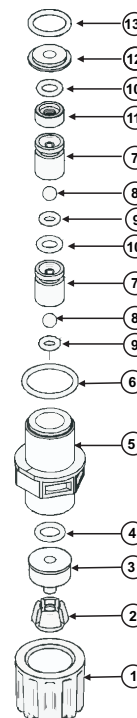
BALL CHECK VALVE 4x6 PVDF

Technical features

Flow: 2-20/h
 Connection: hose 4x6
 Connection : thread 3/8"

59-862-F Suction check valve 4x6 3/8" PVDF / FPM			
59-863-F Injection check valve 4x6 3/8" PVDF / FPM			
N°	DESCRIPTION	MATERIAL	UNITS
1	Nut , valve 3/8" PVDF(59829)	PVDF	1
2	Hose clamp, valve 4x6 PVD(59830)	PVDF	1
3	Hose connector , valve 4x6 (59831)	PVDF	1
4	O-ring 6.75x1.78 FPM (59323 /-T/-E)	FPM	1
5	Nipple, valve PVDF3/8" (59832)	PVDF	1
6	O-ring 15.6x1.78 FPM (59321/-T/-E)	FPM	1
7	Ball guide d4.7 PVDF	PVDF	2
8	Ball d4.7 ceramic	Ceramic	2
9	O-ring 3.69x1.78 FPM (59317 / 59318)	FPM	2
10	O-ring 5.28x1.78 FPM (59324/-T/-E)	FPM	2
11	Ball spacer d4.7 PVDF	PVDF	1
12	Valve plug, 3/4" PVDF	PVDF	2
13	O-ring 11.11x1.78 FPM (59848 /-T/-E)	FPM	1

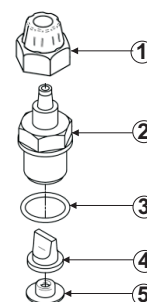
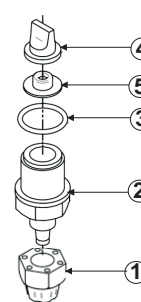
59-862-E Suction check valve 4x6 3/8" PVDF / EPDM			
59-863-E Injection check valve 4x6 3/8" PVDF / EPDM			
O-rings in EPDM			

**INJECTION
59-863-F**

**SUCTION
59-862-F**


LIP CHECK VALVE 4x6 PP

59-850 Lip check valve 4x6 PP				
N°	CODE	DESCRIPTION	MATERIALS	UNITS
1	59802	Nut for 3/8" lip valve connector	PP	1
2	59803	Connector for lip valve 3/8"	P.P.	1
3	59304	Lip valve o-ring 3/8"	FPM	1
4	59804	Lip valve body 3/8" FPM	FPM	1
5	59805	Lip valve guide 3/8"	P.P.	1

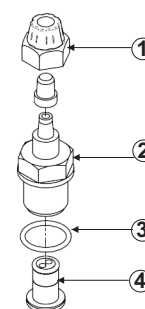
59-857 Lip check valve 4x6 EPDM				
N°	CODE	DESCRIPTION	MATERIALS	UNITS
4	59804-E	Lip valve body 3/8" EPDM	EPDM	1

**INJECTION
59-850**

**SUCTION
59-850**


BALL CHECK VALVE 4x6 SS

59-837-I Injection check valve 4x6 SS				
N°	CODE	DESCRIPTION	MATERIALS	UNITS
1	59802-I	NUT NIPPLE, LIP CHECK VALVE 3/8"	PP	
2	59803	NIPPLE, LIP CHECK VALVE 3/8"	AISI 316	1
3	59304	O-RING LIP CHECK VALVE 3/8"	FPM	1
4	59-841-I	BODY, INJECTION CHECK VALVE 3/8" SS	AISI316 - FPM -	1

59-839-I Suction check valve 4x6 SS				
N°	CODE	DESCRIPTION	MATERIALS	UNITS
1	59802-I	NUT NIPPLE, LIP CHECK VALVE 3/8"	PP	1
2	59803	NIPPLE, LIP CHECK VALVE 3/8"	AISI 316	1
3	59304	O-RING LIP CHECK VALVE 3/8"	FPM	1
5	59-838-I	BODY, SUCTION CHECK VALVE 3/8" SS	AISI316 - FPM -	1

**INJECTION
59837-I**

**SUCTION
59-839-I**
